

CONTINENTAL RANCH

the windmill

November / December 2024 Edition

www.crcatucson.com

November 2024

- 1 Assessment Due
WP Pool Closed for season
- 2 Dog Day at the Pool! 9am to 1pm at WP
- 4 Landscape Committee 6:30pm at WP
- 6 Covenants Committee 6pm at WP
- 7 ARC 6:30pm at WP
- 11 Happy Veterans Day! CRCA Office Closed
- 16 Late Fee Applies
- 19 Board of Directors Meeting 6:00pm at CC
- 21 ARC 6:30pm at WP
- 28 Happy Thanksgiving! CRCA Office Closed
- 29 CRCA Office Closed

December 2024

- 1 Adopt a Family Drive 1st-19th
Casa de los Niños Holiday Drive 1st-20th
- 2 Landscape Committee 6:30pm at WP
- 4 Covenants Committee 6pm at WP
- 5 ARC 6:30pm at WP
- 7 Photos with Santa 10am-1pm at CC
- 16 Holiday Decorating Contest Deadline to Sign Up
- 17 Board of Directors Meeting 6pm at CC
- 18 Holiday Decorating Contest 6:30pm-8:30pm
- 19 ARC 6:30pm at WP
- 24 Christmas Eve CRCA Office Closed
- 25 Merry Christmas! CRCA Office Closed
- 31 New Year's Eve! CRCA Office Closed

2024 Annual Meeting Results

Thank you all who attended this year's CRCA Annual Meeting held at Coyote Trail Elementary on Tuesday, October 22nd. The past year's Board of Directors and the Committee Chairpersons gave their reports for the year and thanked everyone in the community who donated their time to contribute to the success of the community.

The results in order of vote count are as follows:

- Tim Weiler – 850
- Clement DeLarge – 727
- Peggy Bracken – 757
- Connie DeLarge – 700

The results for the street parking vote are as follows:

- Votes in favor – 864
- Votes against – 172

The HOA will retain its authority to regulate parking on public roads, ensuring consistent enforcement of our community's standards as they are currently being implemented.

Congratulations to the 2024-2025

CRCA Board of Directors.

Peggy Bracken | Bill Cicala | Connie DeLarge | Tim Weiler
Fred Fisher | Brandt Smith | Clement DeLarge



Table of Contents

Page 2	2024 CRCA Adopt-a-Family
Page 3	President's Message September and October Recap: Board Meeting at a Glance
Page 4	Halloween Decoration Contest Winners
Page 5	Thanksgiving Food Drive
Page 6	CRCA Decorating Contest
Page 7	Photos with Santa
Page 8	Association Dues Reminder Pool Update Last Call! Lost & Found
Page 9	Tucson Food Truck Roundup
Page 10	Holiday Wish List Drive
Page 11	Christmas Wish List
Page 12-13	Landscape Corner
Page 14	Pet Supply Drive
Page 15	Holiday Festival
Page 16-17	Calendars
Page 18-19	Keep Wildlife Wild
Page 20-21	Cooking Safety
Page 22	Wild Neighbors: Javelina Poop Fairy
Page 23-30	Advertisements
Page 31	Useful Numbers Newsletter Policies
Page 32	Management's Message



2024 CRCA Adopt-a-Family

The holidays have arrived, and as wonderful as the holiday season may be, they can also be stressful, especially for families facing financial hardships. Over the past several years, CRCA has helped numerous local families in the Continental Ranch community through its Adopt-a-Family program. Families in need have been donated a Christmas they never thought they would have, thanks to participation from all the kind and gracious members throughout the community. Over the years many tears of joy have been expressed by the adopted families.

Once again CRCA is asking for the Community's participation during the month of December. A local family in need will be adopted this season and an Angel Tree will be placed at the Windmill Office for them. The families' needs will be posted as "wishes" on the Angel Tree in the CRCA office. If you would like to help brighten the season for these less fortunate local families, please stop by the office and visit the Angel Tree. The tree is filled with gift suggestion tags that give the clothing sizes and gift wish lists specific to the families being adopted. All donations to the families' will be accepted until December 19th, so we are able to deliver these gifts before Christmas.

It is often quite difficult for CRCA to identify families in genuine need because most are too private about their financial hardships. During the month of November, CRCA will be working to identify families for this year's program. If you know of a family that is in financial hardship and could use a little help this holiday season, please contact the office at (520) 297-7600.

Thank you to all those who have been kind enough in years past to help us locate struggling families and determine their needs. As always, food donations will be accepted and donated to the Marana Food Bank. The outpouring of generosity from the CRCA Community is always truly amazing.



President's Message

by Peg Bracken

I hope you all had a great summer and are looking forward to the cooler weather, although we haven't completely cooled down yet.

Thank you to all who attended this year's Continental Ranch Community Associations Annual Meeting held at Coyote Trail Elementary School and voted for this year's director positions.

November means homeowner assessments are due, supporting the homeowner association's operation. We understand that some people may have financial difficulties. If homeowner assessments go unpaid for a full year, they are turned over for collections, and at that point, it is out of our hands. We try to avoid this and will accept a payment plan to help those homeowners stay current. Please, if you are having financial difficulties, contact the office to make arrangements so we do not have to send it to collections.

It was great to see so many people using the pools this year, but unfortunately, they have now closed for the season.

Don't forget to mark your calendars and come get your picture taken with Santa. Check inside the newsletter for more details. We hope to see you all there.

Wishing everyone happy and safe holidays.



September & October Recap: Board Meeting at a Glance

The following are highlights from the regular meeting of the Board of Directors held September 17, 2024, and October 15, 2024, at the community center. Draft minutes are posted to the website within three business days after the meeting. Approved minutes are posted to the website after they are approved at the next appropriate meeting. A copy of approved minutes may also be requested from the office. Recordings of all meetings will be retained for a period of 30 days following posting of approved minutes to the website.

Board Actions:

At the September 17, 2024 meeting, the Board approved Covenants Committee recommendations for fines and pool use suspensions for various unresolved violations; approved the proposal from AAA Landscape to oversee Windmill Park and the monument grass areas, the proposal from PointsWest Environmental to correct an erosion issue at Idle Wild and Long Creek, the proposal from AAA Landscape to grind/remove stumps due to storm damages trees, and the proposal from AAA Landscape to replace a valve on Blandford and Coachline. The Board also authorized the Landscape Committee to contact the attorney for comments regarding the possible dog park in CRCA, approved the use of political signs

during political season as long as the sign attempts to influence the outcome of the election and adheres to AZ State Statute 33-1808, approved the replacement of the Community Center water fountain, website updates, Community Center fee reduction and the Election Committee 2024 procedure.

At the October 15, 2024 meeting, the Board approved Covenants Committee recommendations for fines and pool use suspensions for various unresolved violations; approved the proposal from Brijer Resources to remove a tree and three root balls due to storm damage, approved the proposal from AAA Landscape to desert landscape the Sierra Point Monument, ratified the action in lieu authorizing the CDARS from Alliance Bank to rollover, approved the proposal from Southwest Pest Solutions to continue the annual termite inspections, approved the Oasis Contracts for both Windmill Park and the Community Center and approved the proposal from Sensi Mechanical to replace the mini split system at the Windmill Park pool.

Manager's Report:

The community manager and assistant manager provided their reports to the board which included the status of all projects recently completed and/or currently underway since the previous Board meeting.

Continental Ranch Community Association

HALLOWEEN DECORATION CONTEST WINNERS!

9102 N SAFFLOWER LANE



6975 W RED ROCK DRIVE



8900 N PALM BROOK DRIVE



**CONGRATULATIONS TO THE WINNERS
AND THANK YOU TO EVERYONE THAT
PARTICIPATED IN THE 2024 CRCA
HALLOWEEN DECORATION CONTEST!**

CONTINENTAL RANCH COMMUNITY ASSOCIATION

Thanksgiving

Food Drive

Let's Share
& Care

*Please help us fighting hunger
by donating non-perishable
food items to help benefit
those in need!*

**November
1st-30th**

Drop-off location:
CRCA Management Office
9150 N. Coachline Blvd

ALL DONATIONS WILL GO TO THE MARANA FOOD BANK

Winter Wonderland CRCA Decorating Contest

As always, competition this season is expected to be intense! Each year more and more residents take their decorating to the extreme and compete for the best in show. Holiday lights and decorations are becoming more and more creative and beautiful. The CRCA Board of Directors hopes everyone will have fun this year and give passersby a wonderful show of eyecandy throughout evenings this December.



Do you think you have the best decorated house during the holidays? If so, this contest is for you! It's that time of year again to give our residents a treat this holiday season by turning CRCA into a Winter Wonderland.

Houses will be judged on **Wednesday, December 18th** between **6:30-8:30pm**. Any and all decorations are always appreciated during the holiday season, but if you think your house shows the most holiday spirit, please fill out the form below for your chance to win a gift! You can't win if you don't play – so sign up now!

Holiday Decorating Contest Registration Form

If you would like to participate, please fill out this registration form and return it to the CRCA office by **Monday, December 16th**. You may also send an email to continental.ranch@yahoo.com to register your house. Houses that do not fill out a registration form will not be included in the judging.

Name: _____ Phone: _____

Email address: _____

Address: _____

Office Use Only: Date: _____ Parcel/Lot #: _____ Entered on Master List: _____

CONTINENTAL RANCH COMMUNITY ASSOCIATION

Photos with Santa!



DEC
7TH

COOKIES, DRINKS, CHRISTMAS MOVIES, & CRAFTS!

LOCATED AT THE COMMUNITY CENTER

- 8881 N. COACHLINE BLVD •
- FROM 10:00 AM - 1:00 PM

BRING IN A NON-PERSIHABLE FOOD ITEM FOR THE
MARANA FOOD BANK AND RECEIVE A FREE PHOTO
WITH SANTA FROM WALGREENS ON COACHLINE!

Association Dues Reminder

It's that time again...the semi-annual assessments are due November 1st and homeowners should have already received their statements in the mail.

Payments can be made either online, mailed to the office in the form of a check or money order, dropped off at the office during business hours, or placed in the drop box located just outside the office entrance anytime (check or money orders only and please make sure the account number or property address is included on the payment).

To make a payment online, please visit www.crcatucson.com to access the secure management portal website, and if you need assistance with your password, or if you would like to discuss a payment plan, please contact the office at (520) 297-7600.

Monthly payments break out to around \$31 per month and many residents find this monthly rate to be more manageable than paying the lump assessments twice per year. If you would like to begin monthly pre-payments, please contact our office at (520) 297-7600 for more details. If you are already enrolled in the Auto-ACH payment service, your statement will include this note at the top of the payment coupon: "Balance to be paid by Autopay (ACH), and your payment will be automatically posted on November 15th."

The grace period extends through November 15th before a \$18.00 late fee will be applied. Online payments must be made prior to 6:00 p.m. on November 15th to avoid a late fee. Thank you to all who have already paid their assessment.



Pool Update -

The community center pool closed for the season after Labor Day, on September 2nd, and will re-open again next summer, mid-May 2025.

The Windmill Park pool closed for the season November 1st and will reopen again on March 1, 2025.

A vertical graphic with a blue background featuring a pool tile pattern. On the right side, there is a colorful beach ball with segments in red, white, yellow, and purple.

LAST CALL! Lost & Found

Each year there is a bounty of forgotten items left behind at both community pools, which ultimately ends up in the 'lost and found' graveyard. We encourage anyone who may have left behind any items at the pool over the past year to please come by the office (or call) to check and see if your lost possessions are here to claim. We will be donating and/or discarding all unclaimed items in January, so be sure to check for your lost items before the end of December!



CONTINENTAL RANCH COMMUNITY ASSOCIATION

TUCSON

FOOD TRUCK

ROUNDUP



Wednesday
November 13th



Wednesday
December 11th

Join us at Windmill Park (West parking lot) from 4pm to 7pm. Every 2nd Wednesday of the month!



Stay updated on all community events!

CONTINENTAL RANCH
COMMUNITY ASSOCIATION

CASA DE LOS NIÑOS

HOLIDAY WISH LIST DRIVE

DECEMBER 1ST - 20TH



HELP US SPREAD JOY DONATING A NEW
AND UPWRAPPED ITEM FROM THE CASA
DE LOS NIÑOS WISH LIST ON THE NEXT
PAGE!

DONATION DROP OFF LOCATION:
9150 N. COACHLINE BLVD

FOR MORE INFORMATION CONTACT THE
CRCA MANAGEMENT OFFICE:
(520) 297-7600





Casa de los niños

CHANGING LIVES
FOR GENERATIONS

Christmas WISH LIST

CHILDREN AND FAMILIES NEED YOUR HELP NOW MORE THAN EVER. YOU CAN MAKE A DIFFERENCE THIS HOLIDAY SEASON BY DONATING ANY OF THE FOLLOWING **NEW AND UNWRAPPED** ITEMS FOR A FAMILY IN NEED!

TOY CARS

BOARD PUZZLES

LEGOS

DOLL TOYS

DEVELOPMENTAL TOYS

BOARD GAMES

ACTION FIGURES

NB-5T CLOTHING

PLUSH TOYS

HYGIENE SUPPLIES

SOCKS/UNDERGARMENTS

SOCCER BALL

ARTS & CRAFT KIT

TEEN/ADULT CLOTHING

BUILDING BLOCKS

BABY WIPES

MAKE-UP/SKIN CARE PRODUCTS

BASKETBALL

BABY ITEMS

BOOKS/BOARD BOOKS

SLIME KITS

IMAGINARY PLAY KITS

COLORING BOOKS

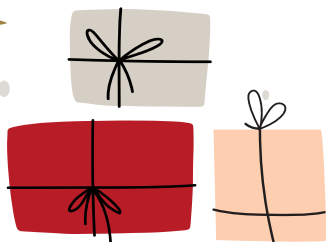
ART SUPPLIES

GIFT CARDS TO TARGET,
WALMART, FRY'S

PLAYDOH

BOTTLES, PACIFIERS

PUZZLES



Landscape Corner - November Do's & Don'ts

Thank you AAA Landscape for providing these helpful landscaping tips and tricks.



- ✓ Bermuda should be watered with one inch of water each week. Bermuda will become dormant as temperatures drop to below 50 degrees.
- ✓ Over seeding should have been done by now.
- ✓ Winter ryegrass should be mowed to 1-1/2 to 2 inches. Keep watering until established and then water only about once a week.
- ✓ Yellowing of the winter lawn may occur when the cold weather sets in. An application of ammonium nitrate will bring back the dark green color.

- ✓ Cut back watering of all trees and shrubs, but continue to water deep. Don't over water or fungus will grow.
- ✓ Plant 3-5 gallon shrubs and 10-15 gallon trees.
- ✓ Clean dead branches out of trees and shrubs.
- ✓ Trim unwanted sprouts from the interior of your citrus trees. This makes it easier to harvest fruit.
- ✓ Keep the skirt of your citrus trees pruned and trimmed to about two or three feet from the ground. This permits a better air flow and minimizes chances of fungus.
- ✓ Plant in full sun: petunias, calendulas, dianthus and snapdragons
- ✓ Plant in part sun or shade: dianthus, geraniums, impatiens, and primrose
- ✓ Keep spent rose blooms pruned.



- ✓ Plant bulbs in well-drained soil that is also high in compost or organic matter. Your bulbs should be planted with about two inches of sand beneath them. Cover with a coarse material such as peat moss or crushed wood products, such as bark. Plant Amaryllis, Anemone, Calla and Easter Lily, Dutch Crocus, Daffodil, Freesia, Gladiolus, Iris, and Ranunculus.
- ✓ Planting in clusters rather than in rows makes for a nice arrangement. Bulbs should be given a good soaking

- ✓ immediately after planting, and every seven to ten days after growth begins.
- ✓ Now is the time to plant seeds for beets, bok choy, broccoli, cabbage, carrots, cauliflower, celery, chard, collards, endive, kale, lettuce, mustard, onions, parsley, peas, radishes, rutabaga, spinach, and turnips.
- ✓ Transplants in November include asparagus, broccoli, brussel sprouts, cabbage, cauliflower, chard, and lettuce.
- ✓ When you plant any of the many varieties of leaf lettuce you can harvest and the plant will keep growing new leaves. You don't have to pick the whole head of lettuce.



- ✓ Don't water the lawn when it's dark.
- ✓ Do not fertilize frost-tender plants such as bottlebrush, bougainvillea, oleander and citrus.
- ✓ Don't procrastinate about preparing for cold weather. Toward the end of November we can get frost, and your garden will be at risk if you don't cover tender plants, flowers and vegetables.
- ✓ Don't ignore weeds. Either pull them later, or use pre-emergent now.



Landscape Corner - December Do's & Don'ts

PREPARE FOR FROSTS NOW.

If you don't care for your sensitive trees, bushes, flowers and vegetables before the first frost, it's probably too late, since the first frost will permanently damage them. It is not uncommon to have up to 20 frosty mornings in December. Be prepared to cover those frost-tender plants throughout December.

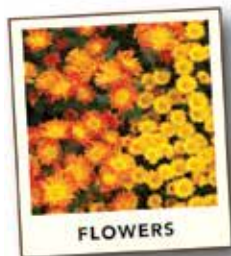
- ✓ Your over-seeded winter lawn should be established by now. If your winter lawn turns yellowish, fertilize. An application of Ironite will bring back the dark green color.



- ✓ Water every 5-7 days, or more often if you notice a drying-out of the soil. Light or sandy soils dry out faster.
- ✓ Wrap the trunks of young citrus and other cold-tender trees with cloth, cardboard or several layers of newspaper (no plastic) to protect them from frost. Leave them wrapped until the threat of frost has passed.
- ✓ Sweet oranges, navels, lemons, tangerines and tangelos may now be picked now but pick only as needed. As the season wears on, the fruits will continue to sweeten. Citrus fruit stores best on the tree.



- ✓ Frost-tolerant trees and shrubs may be planted this month. Dig holes three to five times the size of the root ball but not any deeper. Set the plant so the top of the root ball is ground level and then backfill.
- ✓ Remove dead branches and water sprouts.
- ✓ CHRISTMAS TREES - When you purchase your tree, try to get a freshly cut tree. Feel the needles for dryness; the needles should be pliable. Cut an inch off the trunk, put it in a stand with a water reservoir and fill it daily. If you buy a living tree, don't bring it inside until about a week before Christmas and take it back outside right after the holiday. After the tree has been outside for a while and is again acclimated to the colder weather, you can plant it or donate it to a school or park.
- ✓ Plant seeds: beets, broccoli, cabbage, carrots, cauliflower, garlic bulbs, green onions, leeks, lettuce, parsley, peas, radishes, swiss chard, spinach and turnips.



- ✓ Plant transplants: asparagus, broccoli, cabbage, cauliflower, lettuce (head & leaf)
- ✓ Flowers can still be planted so choose your favorite annuals and perennials.
- ✓ You can still plant bulbs. Plant them in well-drained soil that is also high in compost or organic matter. Your bulbs should be planted with about two inches of sand beneath them. Cover with a coarse material such as peat moss or crushed wood products, such as bark.
- ✓ Chrysanthemums begin to die back after blooming. Cut back dead or dying foliage and add a bit of nitrogen fertilizer.
- ✓ Poinsettias will turn yellow if you water them with the foil sleeve still on because they will sit in the water. Take them to the sink, remove the foil sleeve, water until water comes out the bottom, let them drain for a few minutes and then put the foil sleeve back on.



- ✓ Don't pick grapefruit yet. Grapefruit are the best in late spring or early summer.
- ✓ Don't fertilize trees or shrubs in December. Wait until Spring.
- ✓ Don't over water.
- ✓ Don't ignore pest problems.

Continental Ranch Community Association

Pet Supply Drive!

CRCA is now accepting donations such as leashes, toys, blankets, crates, unopened food, and more for local shelters in need!



You can drop off your generous donations at the Windmill office located at 9150 N. Coachline Blvd.



DECK DOWNTOWN MARANA!

DECEMBER 7TH, 2:00 – 9:00 PM

— TREE LIGHTING AT 6:00 PM —

Santa * Live Performances * Kids' Activities * Holiday Market

MARANA MUNICIPAL COMPLEX

1155 West Civic Center Drive



FOR MORE DETAILS, VISIT:
maranaAZ.gov/events



#MaranaEvents



Sunday	Monday	Tuesday	Wednesday	Thursday	Friday	Saturday
1					1 Assessment Due WP Pool Closed for season	2 Dog Day at the Pool! 9am to 1pm at WP
3	4 Landscape Committee 6:30pm at WP	5	6 Covenants Committee 6pm at WP	7 ARC 6:30pm at WP	8	9
10	11 Happy Veterans Day! CRCA Office Closed	12	13	14	15	16 Late Fee Applies
17	18	19 Board of Directors Meeting 6pm at CC	20	21 ARC 6:30pm at WP	22	23
24	25	26	27	28 Happy Thanksgiving! CRCA Office Closed	29 CRCA Office Closed	30



December 2024

Sunday	Monday	Tuesday	Wednesday	Thursday	Friday	Saturday
1	2 Landscape Committee 6:30pm at WP Adopt a family Drive 1st-19th Casa de los Niños Holiday Drive 1st-20th	3	4 Covenants Committee 6pm at WP	5 ARC 6:30pm at WP	6	7 Photos with Santa 10am-1pm at CC
8	9	10	11	12	13	14
15	16 Holiday Decorating Contest Deadline to Sign Up	17 Board of Directors Meeting 6pm at CC	18 Holiday Decorating Contest 6:30pm-8:30pm	19 ARC 6:30pm at WP	20	21
22	23	24 Christmas Eve CRCA Office Closed	25 Merry Christmas! CRCA Office Closed	26	27	28
29	30	31 New Year's Eve! CRCA Office Closed				

Keep Wildlife Wild!

Please Don't Feed

It is essential that people do NOT feed wildlife!

Feeding, attracting, or enticing wildlife (except birds and tree squirrels) is illegal in Pima, Pinal and Maricopa counties. Violations can result in up to a \$300 fine.

Several other cities and counties in Arizona also have restrictions on feeding wildlife with varying penalties. Check your local city or county ordinances for more information.

Keep wildlife wild and healthy with these tips:

- **Do not intentionally feed wildlife;** animals quickly associate access to food with humans.
- **Keep bird seed off the ground** and out of reach of other wildlife. A platform can be attached to the bottom of most feeders to catch spilled seed.
- **Store all garbage securely.** Do not discard edible garbage where javelina, bears, coyotes and other wildlife can get to it. Garbage cans should be put out on the morning of collection and secured as soon as possible to avoid animal scavenging.
- **Feed pets indoors** or remove leftover food immediately.
- **Fence your garden or yard** to provide a physical barrier to exclude wildlife. Poultry wire laid horizontally and buried just below the soil surface can prevent some wildlife from digging.
- **Securely close all openings** to spaces under buildings and mobile homes. This is most critical in the spring when wildlife like foxes and skunks are looking for den sites.
- **Don't let your pets roam free** – they may end up a meal for coyotes, hawks, owls, bobcats and other predators, or come into conflict with javelina and skunks. Keep your pets on a leash whenever they are out of the yard, and always supervise small pets when outdoors.
- **Trim shrubs** up from the ground so they don't create hiding places for wildlife.

Photo by George Andrejko



- **Plant native vegetation** instead of tempting nonnative ornamentals. Contact your nearest Arizona Game and Fish Department offices for a list of javelina-resistant plants.
- **Discourage wildlife presence.** You can often do wildlife a favor by going out of your way to make them uncomfortable. If wildlife maintain their natural fear of people, they are less likely to become a nuisance and more likely to live a longer life. Make wildlife feel uncomfortable by making loud noises, throwing rocks, etc.
- **Ask your neighbors to follow these steps** (and share this information with them). Wildlife that are attracted to one home often visit adjoining lots. Neighbors working together are most effective.
- **Contact Arizona Game and Fish** if feeding activity in your neighborhood is causing wildlife to become bold. Call our 24/7 Operation Game Thief, confidential tip hotline at 1-800-352-0700.

Frequently Asked Questions

Q: Why is it illegal to feed wildlife?

A: Feeding wildlife is not in the best interest of wildlife as it often leads to property damage and/or safety issues for people and pets living in the area. The majority of wildlife attacks in Arizona are the result of fed wildlife becoming habituated to humans.

Q: Won't wildlife starve if people don't feed them?

A: Wildlife know how and where to find the food that they depend upon, which often varies by season. Wildlife may not have the enzymes to digest some ingredients that are not found in their natural diet. Human-provided foods do not provide the proper balance of minerals. Consuming human-provided foods can cause digestive disorders, malnutrition and other diseases in wildlife.

Q: What is the fine for feeding wildlife?

A: ARS 13-2927 is a petty offense that can result in a fine of up to \$300. You may also be cited with ARS 13-2908: Criminal Nuisance, which can result in an additional fine of up to \$500.

Q: What happens to wildlife that becomes too comfortable around people?

A: When wildlife becomes habituated to humans and public safety is an issue, the department's only option is lethal removal.

Q: Can I still have a bird feeder?

A: Yes, as long as it is in an enclosed yard or has a platform attached to catch spilled seed. The bird seed must be available only to birds and tree squirrels.

Q: Can I put out water for birds and wildlife?

A: Yes, it is legal to place water in your yard for wildlife. Just be aware that excess water may bring in unwanted wildlife such as predators or javelina.

WHAT IS THE LAW?

Unlawful Feeding of Wildlife (ARS §13-2927):

- A. A person commits unlawful feeding of wildlife by intentionally, knowingly or recklessly feeding, attracting or otherwise enticing wildlife into an area, except for:
1. Persons lawfully taking or holding wildlife pursuant to title 17 or pursuant to rules or orders of the Arizona game and fish commission.
 2. Public employees or authorized agents acting within the scope of their authority for public safety or for wildlife management purposes.
 3. Normal agricultural or livestock operational practices.
 4. Tree squirrels or birds.
- B. This section applies in a county with a population of more than two hundred eighty thousand persons.
- C. Unlawful feeding of wildlife is a petty offense.

RESOURCES

For more information about preventing conflicts with wildlife, see the Arizona Game and Fish Department's "Living with Wildlife" webpages at www.azgfd.gov/urbanwildlife or call one of the department offices:

- Pinetop (928) 367-4281
- Tucson (520) 628-5376
- Flagstaff (928) 774-5045
- Mesa (480) 981-9400
- Kingman (928) 692-7730
- Phoenix (602) 942-3000
- Yuma (928) 342-0091

www.azgfd.gov • (602) 942-3000

Arizona Game and Fish Department

The Arizona Game and Fish Department prohibits discrimination on the basis of race, color, sex, national origin, age, religion, or disability in its programs and activities. If anyone believes that they have been discriminated against in any of the AZGFD's programs or activities, including its employment practices, the individual may file a complaint alleging discrimination directly with the Director's Office, 5000 W. Carefree Highway, Phoenix, AZ 85086-5000, 602-942-3000, or with the U.S. Fish and Wildlife Service, Attn: Civil Rights Coordinator for Public Access, 5275 Leesburg Pike, MS:WSFR, Falls Church, VA 22041-3803. Persons with a disability may request a reasonable accommodation or this document in an alternative format by contacting the Director's Office as listed above.



Thinking of relocating and selling your house?



Before a house ownership changes, the HOA is requested to provide a disclosure statement specific to that property. An inspection is completed, and any HOA issues are noted. This will not only include things that are non-compliant, but things like faded paint, or any other changes you made since moving into Continental Ranch. All these issues, however minor, must be corrected at the time of sale.

In many cases, it is just a matter of filling out an ARC form and waiting for approval for a change that was made without prior approval. If this report is requested early in the process, it is usually a simple matter to get the violations corrected. The prospective new owner can then be provided written assurance that the home is in full compliance with HOA governing documents.

If you have made any exterior changes at your home without obtaining ARC approval, submit the required ARC paperwork now so that these issues are all resolved well in advance of your listing your home for sale. Examples of items we are finding owners have not submitted ARC applications for include: sheds, pergolas, gazebos, patio enclosures, above ground spas, play structures, security screen doors, hardscape additions in the front yard, etc.

Please contact the CRCA Management office to receive instructions on how to submit an ARC application.



“COOK WITH CAUTION”

Most cooking fires in the home involve the kitchen stove

- If you are simmering, baking, or roasting food, check it regularly, remain in the home while food is cooking, and use a timer to remind you that you are cooking.
- Keep anything that can catch fire — oven mitts, wooden utensils, food packaging, towels or curtains — away from your stovetop.

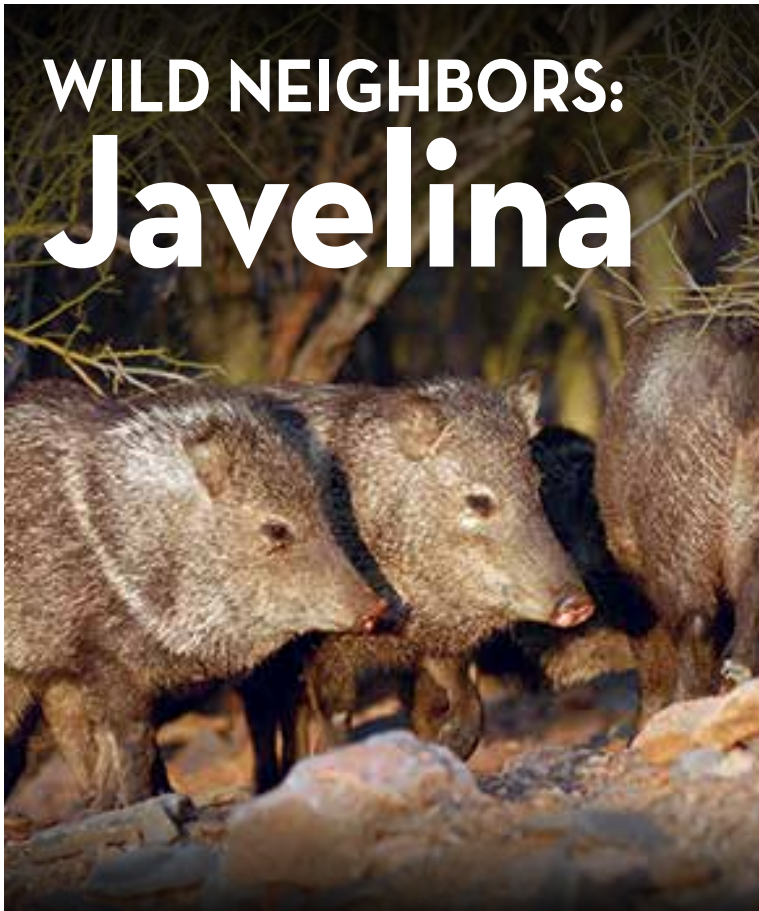
**NORTHWEST
FIRE DISTRICT**

www.nwfdaz.gov



Source: National Fire Protection Association

WILD NEIGHBORS: Javelina



Javelinas and dogs are not a good mix. There are far more javelina attacks on dogs than humans, and most human injuries occur while they are trying to protect their dog during an attack. Javelinas react to dogs the same way they do with coyotes. They perceive both canines as a serious threat to their young, and a dog barking is also perceived as a threat to the herd. If you see a herd of javelinas while taking your dog(s) for a walk, we advise you to turn around and walk away from the herd.

When dealing with wildlife intruding on your property or business, it's safest to let the experts handle it. Call 911 in an emergency. The Northwest Fire District often works closely with Animal Experts, Inc. They are certified wildlife specialists with more than 40 years of experience in the wildlife animal control business involving the humane capture and relocation of animals in the Sonoran Desert.

This wildlife safety tip was brought to you by Animal Experts Inc.

www.AnimalExpertsInc.com



⊗ Dog Poop Doesn't Biodegrade Like Wild Animal Poop

We feed our dogs food that's very different from the food wild animals eat, therefore, dog waste does not biodegrade quickly like wild animal waste. Because of the sheer number of pets in suburban neighborhoods and in local parks, this hardy dog waste accumulates.

⊗ Dog Poop Contains Harmful Bacteria, Parasites.

Dog waste can contain harmful organisms like E. coli, giardia, salmonella, roundworms, hookworms, and cryptosporidium. These can be passed on to you or your pet, and may cause health problems.

SIERRA POINTE

AT CONTINENTAL RANCH

NEW A. F. STERLING HOMES

CONTINENTAL RANCH RESIDENTS RECEIVE \$5,000 TOWARDS OPTIONS, CLOSING COST OR INTEREST RATE BUYDOWN.



\$381,900

MODEL 1689

1680 SQ. FT. 3 BEDROOM, 2 BATHS, POWDER ROOM, GREAT ROOM, DINING ROOM, HOME OFFICE, COVERED PATIO, 2-CAR GARAGE



\$429,900

MODEL 2416

2416 SQ. FT. 3 BEDROOM, FLEX ROOM, 2 BATHS POWDER ROOM, HOME OFFICE, GREAT ROOM, DINING ROOM, COVERED PATIO, 2-CAR GARAGE



\$362,900

MODEL 1265

1265 SQ. FT. 3 BEDROOM, 2 BATHS, FAMILY ROOM, DINING ROOM, COVERED PATIO, 2-CAR GARAGE



\$404,900

MODEL 2084

2084 SQ. FT. 3 BEDROOM, 2 BATHS, POWDER ROOM, GREAT ROOM, DINING ROOM, HOME OFFICE, FLEX/OPTIONAL 4TH BEDROOM, COVERED PATIO, 2-CAR GARAGE



A.F. STERLING HOMES

www.afsterling.com • Diane Terpstra 520-989-1291



You're invited to the Annual
Masterpiece Festival
Celebrating our gifts from the Master

9am - 3pm Saturday, Nov. 2

Come shop over 60 artisan exhibitors of handmade goods, a bake sale, food trucks, and more!
 Visit the Information Table to fill out an entry slip for our drawing. Bring this card with you and receive a bonus drawing entry!



1431 W Magee Rd,
 Tucson, AZ 85704
umcstmarks.org

LM Flooring & Shower Specialists LLC
 520-991-9933
 Exceptional Workmanship & Service
 Tile/Wood/Stone Stack
 Bonded*Insured*ROC 353109




ROC324740

LM Painting, LLC
Residential & Commercial Painting

Exterior and Interior
 Roof and Garage Floor Coatings

Licensed
 Bonded
 Insured

Leo Martinez (520) 991-9933
LeoMartinez_1006@msn.com



We have \$140 maintenance service on small yards, \$120 pre emergent and artificial turf installed as low as \$7 a square foot with 15 year warranty with 6 different types of turf to choose from.




Products/Services

- Landscape contractors and designers
- Sprinkler systems repair services (landscaping)
- Landscape lighting
- Lawn and gardening services
- Tree planting services
- Shrub planting services
- Lawn sprinklers
- Landscaping services
- Turf installation
- Lawn seeding operations

23 years, locally owned,
 Estimates, Installation, New Construction, Remodeling
 Specialty: Boulders, Erosion Control, Flowers, Gardens,
 Landscape Designer, Lighting, Sprinkler Systems,
 Irrigation Systems, Timer Replacement Etc

520-272-9978
 520-797-0921



One rate. We promise.

Drive away with our one rate guarantee on auto loans.

Family outgrowing your car?

Hughes Federal Credit Union can help you get the car you want, and the rate you need. Hughes is one of the only financial institutions in the country that doesn't switch loan rates based on a qualified buyer's credit score. That means you get our one rate guarantee regardless of credit score. We promise. When it's time for your next new or used car, Hughes is here to take you further.



Check out our rates at HughesFCU.org/Auto and apply today.



HughesFCU.org
520-794-8341

Insured by NCUA. Certain restrictions apply. *One Low Rate applies to all Hughes Federal Credit Union loans except credit builder loans and mortgage loans, which are offered through an outside vendor. For members with approved credit.



TOP 1% OF REALTORS FOR 18 YEARS

Selling the ranch since 1996

GREGG MAUL

SOLD



ABR, GRI, CRS, CMAS, SRS

Associate Broker
Your Local Expert
making your plans
come true

Just Results - Your Home Sold
I will get you more money with less hassles;
faster sell than any other realtor!
NOW is the Time to Sell

Free quote, No obligation, Zero Hassles, No Pressure
Ask about my Cancel/Easy Out Home Listing

First in Communication.

Communicate your way—email, text or phone. See
my reviews and video endorsements at Realtor.com
and www.GreggMaul.LongRealty.com
phone: 520-471-8088 email: GMaul@flash.net

Gregg Maul's Home Finder App

- Be the first
- Download
- Click Mobile App
on left side menu
- No obligation
- No pressure



Download App at www.GreggMaul.LongRealty.com

Now selling over 942 homes, career to date

Tucson's Market Share Leader

25 years in Real Estate • 27 years Tucson Resident

If your home is currently listed - this is not for you, not a solicitation.

Lord of Grace Preschool

Enrolling 2-5 year olds
2 day, 3 day, and 5 day options

Kindergarten prep - socialization - faith
New program - expanded playground

lordofgrace.org - 520-744-7400



Arizona Territory

Marc Martinez
Realtor/Investor

6444 E Tanque Verde Rd
Tucson AZ 85715
Mobile: 520-271-6175
MarcMartinezAZ.com
PRO-HouseBuyers.com
We Buy and Sell Houses

Marc25RealEstate@gmail.com



...it's what people call us.



* Best Workmanship * Best Service
* Best Products * Best Warranty

Residential / Commercial

- Proudly serving Continental Ranch for over 14 years.
- Referred by 100% of our clients.

(520) **891-MIKE**
(6453)

Dual Licensed, Bonded
Insured
Roc # 268906

* Interior
* Exterior



A+ Rated
Angie's list & BBB

Mike Loughlin
Owner / Operator - Master Craftsman
Mike@TucsonBestPainters.com

Place Your Ad Here

Contact Valaree at (520) 297-7600 or email
continental.ranch@yahoo.com for more information.



Web-Specials for YOU!



For all of our neighbors in Continental Ranch...

Special Self Storage Offer

Climate Controlled Storage • Facility Access On Your Phone • Easy Online Bill Pay

Visit our website
Scan the Code



Ready to Rent?
Sign Up Online



📍 8611 N Continental Reserve Loop, Tucson, AZ 85743

📞 (520) 633-4817 ✉️ sil1@nationalselfstorage.com 🌐 nationalselfstorage.com

Join us for any and all upcoming events!

Recurring Events

Sunday Worship, 2 Campuses!

With Praise Band 10am Sanctuary Campus
 With Choirs 8:30 & 10am Magee Campus

Soul Station
 5:30pm Every Wednesday
 Join us for dinner, a short study, and communion

Pub Theology
 6pm Last Monday Every Month

Youth Group (Grades 6-12)
 4-6pm Most Sundays

United (Grades 4-7)
 1-3pm Quarterly

Concert Series
 3pm various Sundays
 Grab a Concert Series brochure!

Magee Campus 1431 W Magee Rd, Tucson, AZ 85704 520-297-2042
 Sanctuary Campus 7620 N Hartman Ln, Suite 100, Tucson, AZ 85743 umostmarks.org

Upcoming Events

NOV
 Rummage to the Rescue 9am Saturday, Nov. 9
 Thanksgiving Eve Service 6:30pm Wednesday, Nov. 27

DEC
 Sonoran Bells Concert 7pm Saturday, Dec. 7
 Christmas Cantata 3pm Sunday, Dec. 15
Advent Dec. 1-24

Christmas Eve
 Magee Campus 11am Lessons & Carols
 5pm Family Service
 Sanctuary Campus 5pm Family Service
 7pm Traditional Service
 9pm Traditional Service with communion
 7pm "Unplugged" Service

Christmas Day
 Magee Campus
 2pm Traditional Tongan/AAPL Service

Veteran Owned Business



LICENSED BONDED INSURED ROC 338213

Call or Text Today!

520-709-7094

Remodeling Repairs Improvements

- *Carpentry
- *Drywall repair/tape/texture *minor electrical
- *painting
- *Assembly/installations *furniture/blinds/shades
- *grab bars/ada equipment *electromeric roof coating
- *minor plumbing
- *Child/senior proofing
- *yard work/trim
- *coolers
- *power Washing carport/driveway
- *complete door services *patio doors & rollers
- *pocket/track doors
- *pet doors (also in walls) *and so much more.....



Continental Ranch Only

40% Off 1st Pest or Weed Control Service

Family/Pet Friendly Products

100% Satisfaction Guarantee

Trusted with over 300 ★★★★★ reviews on Google



520-293-1555





THE WATERMARK AT CONTINENTAL RANCH

Assisted Living & Memory Care

High school seniors then, happy seniors now

They knew each other back in school. Now they're meeting for lunch again, only it's great cuisine now. They still take classes, but just the ones they love. Their social life is back in gear, and they don't get carded for happy hour. Oh, the people you meet at The Watermark at Continental Ranch.

Call **520-477-3161** to
plan a private tour.



friends for good

 A WATERMARK RETIREMENT COMMUNITYSM
2409-MCR-2077A 

8689 North Silverbell Road • Tucson, AZ 85743
WatermarkContinentalRanch.com

Useful Numbers

Non-Emergency Marana Police Department

520-382-2000

Poison Control

520-626-6016

Animal Control Marana

General Questions: 520-382-8020

Officer Response: 520-682-4032

Arizona Game & Fish Department

(to report Coyotes, Bobcats, etc.)

520-628-5376

Pima County Hazardous Waste

(including green pools on vacant property)

520-791-3171

CRCA Office

520-297-7600

CRCA Emergency

520-780-9163

Marana Permits

520-382-2600

AZ Blue Stake

800-782-5348

Marana Parks & Recreation

520-382-1950

Waste Management

520-744-2600

Tucson Water

520-791-3242

Tucson Electric Power

520-623-7711

Southwest Gas

877-860-6020

Mountain View Post Office

Thornydale & Magee

520-744-6720

Newsletter Policies

The Continental Ranch Windmill is published bimonthly by the Continental Ranch Community Association (CRCA), and is prepared under the direction of the CRCA Board of Directors. The Windmill strives to maintain a positive message while informing the community of the various projects undertaken by the Board, advertise notices to the community, and promote the accomplishments within CRCA.

Letters To The Editor

Letters must be signed and include a phone number for verification. Names will be withheld upon request. Anonymous letters or articles will not be printed. Publication of letters will be at the discretion of the CRCA Board of Directors.

Advertising Policy

The acceptance of a business ad in the newsletter does not constitute approval or endorsement by the CRCA. "The Association reserves the right, in its sole and absolute discretion, to refuse to accept any advertising submittal made by a prospective advertiser of the Association's newsletter or other publications." Ad publication is subject to space availability on a first-come, first-serve policy and could be denied or postponed due to lack of space in a specific issue. All advertising is subject to current Advertising Rates, as adopted by the Board of Directors. All high resolution advertising is due at the Association office by the 15th of the month prior to distribution. Ads must be submitted via email at continental.ranch@yahoo.com. The preferred file format for ad submissions is PDF, however JPEG is also accepted. For specific ad size dimensions please e-mail the address above for additional information. Electronic distribution is bi-monthly and will take place on or before the first business day of that month.

Advertising Rates

Business Card	\$45
Quarter Page	\$75
Half Page	\$130
Full Page	\$227

* 3 and 6 month discounts available

Political Ads must have "Paid advertisement. Not endorsed by the CRCA" in at least 8 point type at the bottom of the ad.

Management's Message

November finds us grateful for many reasons this year. Thank you to all who participated in this year's Annual Election! I'd like to applaud the community for an impressive voter participation in this year's CRCA Annual Election which took place on October 22nd! Many volunteers gave their time to ensure a fair and efficient election for the Association. Thank you to the Election Committee and to the Board of Directors who are passionate about Continental Ranch and its residents.

Here at the management office, we are especially grateful for the privilege to serve this exceptional community, and we remain committed to providing the top-notch service you deserve – thank you.

Turf at Windmill Park and the monuments were overseeded for ryegrass this winter. AAA Landscape recommends waiting until mid-November for activities, so please be respectful and avoid walking on the grass until then.

We continue to enjoy our Arizona-fall weather, which has so far been well above average. Speaking of beautiful Arizona Autumn weather, it's worth shining a light on all the great outdoor activities the Town of Marana Parks and Recreation has to offer. Check out all they have to offer online at their website, www.maranaaz.gov/recreation or at https://www.maranaaz.gov/s/2024Fall_ActivityGuide-DIGITAL.pdf.

This year's holiday events, in case you missed it inside the newsletter, mark your calendars for Dog Day at the Pool, the Holiday Decorating Contest, the Adopt-a-Family Drive and the Photos with Santa event.

A few other important days in the upcoming months' worth noting are:

- Day of the Dead (November 2)
- Veterans Day (November 11)
- Thanksgiving (November 28)
- Black Friday (November 29)
- National Christmas Lights Day (December 1)
- National Pearl Harbor Day of Remembrance (December 7)
- Winter Solstice (December 21)
- Christmas (December 25)
- New Years Day (January 1)

Happy holidays from your Board of Directors and Management team! We wish everyone a wonderful and safe holiday season!

Lori Wuollet, Community Manager

On behalf of JJ, Sharon, Valaree and Elizabeth

crca • page 32

Address 9150 N. Coachline Blvd.
Tucson, AZ 85743

Phone (520) 297-7600

Fax (520) 297-7917

E-mail continental.ranch@yahoo.com

Web www.CRCATucson.com

Lori Wuollet, Community Association Manager
lori@hoamanagementsolutions.com

J.J. Velarde, Assistant Manager
jj@hoamanagementsolutions.com

Sharon Duarte, Accounts Manager
sharon@hoamanagementsolutions.com

Elizabeth Landeros, Homeowner Covenants Liaison
elizabeth@hoamanagementsolutions.com

Valaree Cavazos, Office Assistant/
Activities Coordinator
valaree@hoamanagementsolutions.com

Office Hours:
Monday-Friday, 8 a.m. to 6 p.m.
Saturday and Sunday, Closed

Payments can be made at the office in the form of a check or money order.

In case of emergency, please call (520) 780-9163 and follow the prompts. This number is not for reporting violations or dealing with delinquencies.

